

CertainTeed  
**EnergyEdge™**  
Foundations



\* Patent Pending

**FORM – INSULATE – PROTECT**

**In One Time Saving Step**

**CertainTeed**  
SAINT-GOBAIN

Home Builder  
Executive Magazine  
2010 Innovation Award

# EnergyEdge

**Saves you time and money**

EnergyEdge™ enables a slab to be formed and insulated, an IECC requirement, in one time saving step

- EnergyEdge forms the slab instead of wood or metal forms
  - > No return trip needed to remove forms
- EnergyEdge meets IECC building code R-10 requirement for slab edge insulation
  - > No return trip to install insulation to meet code
- EnergyEdge provides a protective finished edge
  - > Leaves an attractive look that protects the enclosed insulation



# EnergyEdge

## A 3-IN-1 SOLUTION

Form,  
Insulate &  
Protect in one step

### 1.

**Precise slab forming — permanently in place**

- Lineals, braces, couplings and corners are designed to ensure a precise form set
- Lineals can be secured to the top of the stem wall using EnergyEdge braces, or supported at the face of the form if desired
- Lineals remain level and in place during the pour
- Braces are embedded in the slab enabling immediate removal of exterior supports (if utilized) once the pour is complete
- Save time stripping forms and the cost of replacing and disposing of wooden forms

### 3.

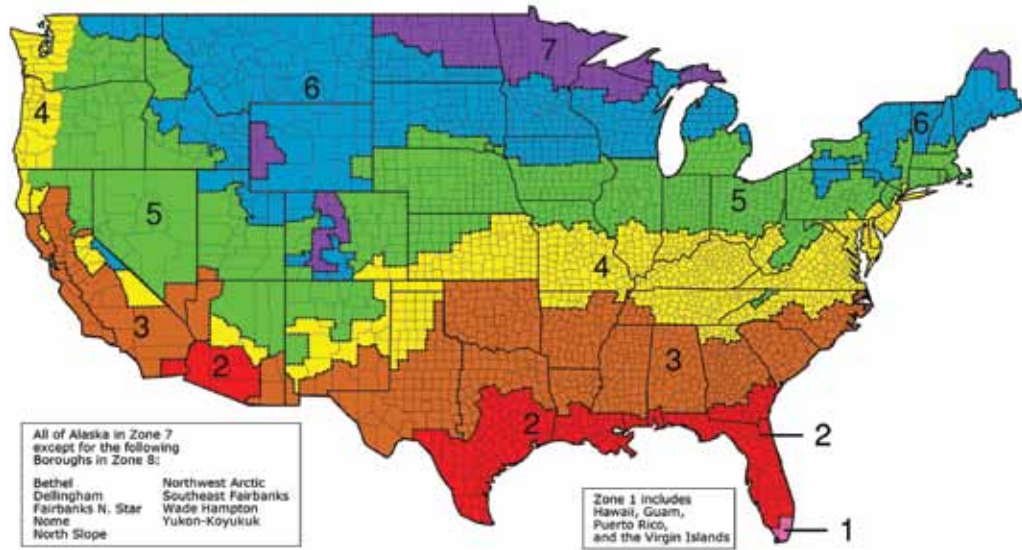
**Protective Edge**

- UV and impact resistant PVC shell protects the enclosed insulation from damage
- Lineals provide a decorative finish between grade and siding
- Insulation contains an organic mineral that is a deterrent to termites

"It's just like forming any other slab on grade with better end results. Anything we can be doing as contractors to help with energy conservation is important."

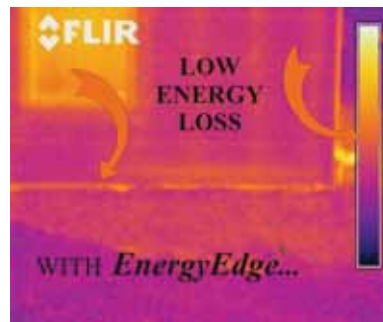
Rudi Sauerwein, Wichita, KS  
8,800 sq ft elementary school

**Why Contractors Prefer EnergyEdge**



## 2. Meet Building Code

- Meet code while installing the form
- Lineals are insulated to R-10, meeting IECC code for slab edge insulation in climate zones 4 and above
- EnergyEdge slab edge insulation is estimated to save homeowners up to \$200 per year in energy costs based on zone 4 testing



"After installing EnergyEdge on over twenty buildings, I believe this product to be the most cost efficient method of complying with the 2006 Energy Standards for heat loss/gain at a concrete slab edge. It's innovative design and quality construction makes it easy to use, while it enhances yours and your client's bottom line."

Thomas L. Woltkamp, President  
Woltkamp Constuction Co., Inc.  
Topeka, Kansas

ge: A better choice than alternative solutions

# Features and Benefits

Contractors and builders now have an innovative way to save time and design code compliant slab edge insulation into their homes and buildings

BUILDER		CONTRACTOR	
FEATURE	BENEFIT	FEATURE	BENEFIT
Meets IECC code for R10 insulation at slab edge	Code compliance	Stay in place form	Reduces wood and metal form cost of removal, cleaning, transportation and disposal
Reduces heat loss	Decreases homeowner's heating cost, increases comfort	Immediate breakdown	Eliminates return trip to job site
One step installation	Reduces job site traffic	Protected insulation	Eliminates return trip to install insulation, reduces labor
Protects insulation	Long lasting	No oiling of forms needed	Eliminates oil handling and disposal costs
Insect resistant insulation	Reduces likelihood of termite/insect infiltration	Complete line of accessories – easy to cut with power saw	Accommodate virtually any slab edge layout
Decorative PVC finish	UV and "weedwacker" resistant	Lightweight – 12' insulated lineal = 18lbs	Reduces job site labor, lowers risk of injury
Coatable finish	Can be painted to match siding color	Smooth & level Screeding surface	Fast job site turnaround
Energy Star recognized	Contributes to qualification	Saves natural resources	Positions your business as Green
Satisfies ASHRAE 90.1	Benefits performance based energy analysis		

# Easily Customize EnergyEdge to the Solution you need



Energy Edge Components	Part No.	Usage
<b>LINEAL</b>		
EngyEdge mbForm FD 12' GY	EELN124mb	use with 2x4 sill plate, metal buildings and other full bearing wall systems
EngyEdge fbForm FD 12' GY	EELN126fb	use with 2x6 sill plate, ICF block, SIP and CMU systems
EnergyFlash Form FD 12' GY	EELN12EF	use to protect insulation adhered to slab edge in retrofit or non EnergyEdge form slab construction
<b>FITTINGS</b>		
EngyEdge Brace FG BLK	EEBR	use with mbForm & fbForm
EngyEdge mb90 insde cmr FG GY	CNINMB90	use with mbForm
EngyEdge mb90 outsd cmr FG GY	CNOUMB90	use with mbForm
EngyEdge fb90 univl crnr FG GY	XCNFB90	use with fbForm
EnergyFlash 90 insd cr FG GY	CNINEF90	use with EnergyFlash
EnergyFlash 90 outsd cr FG GY	CNOUEF90	use with EnergyFlash

Fittings are designed for easy assembly with no need for mechanical or solvent fastening.

## QUALITY IS JUST THE BEGINNING



Since 1904, CertainTeed has been manufacturing high quality, innovative building products, including roofing, insulation, vinyl and fiber cement siding, vinyl fence, railing and deck and pipe. Our name is derived from the slogan "Quality made certain, satisfaction guaranteed," and reflects an unwavering commitment to the building professionals who rely on us. This commitment, and our many years of experience in product design, were applied to the challenge of creating a better foundation.

## buildingresponsibly™

CertainTeed respects the environment through the responsible development of sustainable building products and systems.

### ASK ABOUT ALL OF OUR OTHER CERTAINTEED® PRODUCTS AND SYSTEMS:

ROOFING • SIDING • TRIM • WINDOWS • DECKING • RAILING • FENCE  
INSULATION • GYPSUM • CEILINGS • FOUNDATIONS • PIPE

[www.certainteed.com](http://www.certainteed.com)    <http://blog.certainteed.com>

CertainTeed Corporation  
P.O. Box 860  
Valley Forge, PA 19482

Professional: 800-233-8990  
Consumer: 800-782-8777

© 05/11 CertainTeed Corporation, Printed in the U.S.A.  
Code No. 40-99-02B

