

CertainTeed

 **ThermaEZE**TM
Thermal Insulation System



**The Future of
Insulated Concrete
Has Arrived**

CertainTeed
SAINT-GOBAIN



ThermaEZE™

Thermal Insulation System

The ThermaEZE™ Thermal Insulation System provides a cost-effective, **highly efficient** way to insulate poured concrete walls, both above and below grade.

Builders and **contractors** appreciate how easy ThermaEZE is to use and how effortlessly it can be integrated with their current forms and construction techniques.

Homeowners enjoy more comfortable living spaces, reduced energy consumption, and integral protection against termites.

And all these benefits are delivered by a system that is specifically designed to minimize **environmental** impacts.

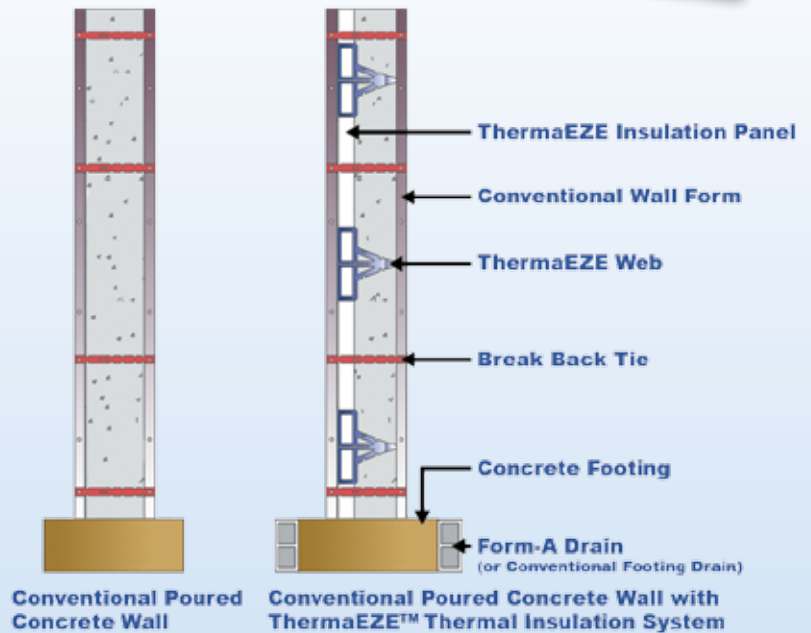


What is the ThermaEZE system?

A revolutionary new approach to poured concrete wall construction.

The ThermaEZE™ Thermal Insulation System consists of panels of expanded polystyrene (EPS) foam, available in a number of dimensions (*see back page for details*) that work well with most form systems. The panels are set within the wall forms prior to the concrete pour, and are held in place by a patented web structure that weaves throughout the concrete.

Once the concrete cures, the forms are removed to reveal a wall surface that is fully insulated. The ThermaEZE webs incorporate fastening strips on the exposed face to facilitate application of finish materials like drywall. ThermaEZE is suitable for both interior and exterior walls; consult local building codes for interior finish requirements.



R-Values

Foam Panel Thickness, Inches	ThermaEZE Panel Min. R-Value(1)	Wall Assembly R-Values (2)	
		Concrete Wall Standard Thicknesses 8"	10"
2.0	7.7	9.6	9.8
2.5	9.6	11.6	11.7

International Energy Conservation Code Compliant (for Foundation Walls)

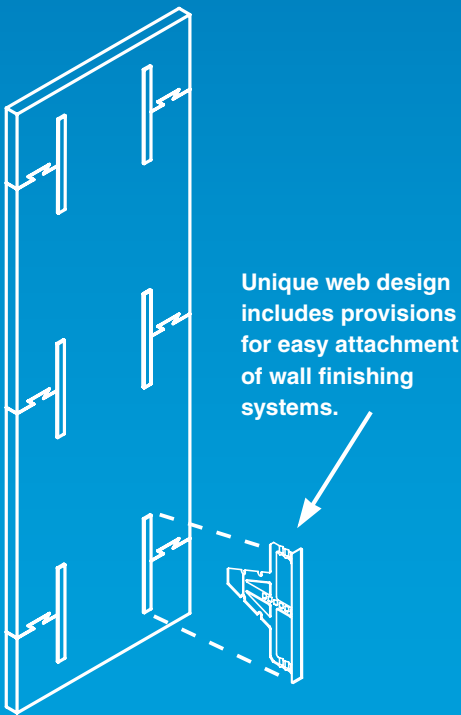
(1) Design Thermal Resistance

(2) Single sided insulation. Based on tested foam R-values.





ThermaEZE
U.S. Pat. No. 6,079,176



Most parts of the United States are susceptible to termite activity. And untreated insulation can provide an environment conducive to this activity.



Benefits

of the ThermaEZE Thermal Insulation System

Reduced energy usage

- > High R-value EPS foam panels insulate foundation walls, reducing foundation heat transfer and lowering energy costs.
- > It is estimated that a basement kept uninsulated may contribute up to 60 percent of the heat loss in a tightly-sealed home that is well insulated above-grade (Source: *Building Foundation Design Handbook*, Oak Ridge National Laboratory Report Sub/86-72143/1).

Pest protection

- > Every ThermaEZE panel receives Perform Guard® termite resistance treatment (see below).*
- > The Perform Guard treatment uses safe and proven salt-type compounds, unlike other foam insulation products that use registered insecticides.

Low environmental impact

- > ThermaEZE EPS foam panels are odor-free and contain no CFCs, HCFCs, HFCs or formaldehyde.
- > The ThermaEZE system eliminates the need for wood studs, helping to conserve natural resources.

Code compliant

- > Meets ASTM C578, Type I. UL approved.
- > International Energy Conservation Code (IECC) compliant for foundation walls.
- > Evaluated for below grade use by the ICC-ES and meets ICC-ES EG239 requirements (see ICC-ES ESR-1006). Properties evaluated include: surface burning characteristics, termite resistance, thermal performance (R-values).

Superior moisture and mildew resistance

- > No moisture wicking from concrete wall to the foam panels, which can happen with studs and insulation batts.
- > No gaps between insulation and concrete where condensation and mildew can form.

Construction cost savings

- > Installed as wall forms are constructed; no additional time and labor required to frame and insulate walls after they are formed.
- > Provides a ready-to-finish surface.

buildingresponsibly™

CertainTeed respects the environment through the responsible development of sustainable building products and systems.

Termite Control

ThermaEZE EPS panels treated with PerformGuard can help to control this problem. An inorganic material that is a deterrent to termites is incorporated right into the panel during the manufacturing process. It is safe, noncorrosive and nontoxic. Most important, termites give it a wide berth.

Note: ThermaEZE with Perform Guard is a termite-resistant insulation. It is not a barrier system, and should be used in conjunction with a total insect management program available from a reputable pest control firm.

*Perform Guard® is a registered trademark of AFM Corporation.

Installation

> The ThermaEZE Thermal Insulation System installs fast and easy with no special skill or training required.

> This system eliminates the need for subsequent material and labor, helping to save both time and money.

> ThermaEZE provides the required wall insulation, and eliminates the need for framing on interior walls.



STEP 1: Insert ThermaEZE webs into the slots of the ThermaEZE insulation panel.

STEP 2: Install ThermaEZE panels into wall cavity as you erect your wall forms.*

STEP 3: Place reinforcing bars in the slots provided in the ThermaEZE webs or on the notched wall ties and you're ready to pour.

STEP 4: Once the concrete has cured and your forms are removed, the wall is ready for finish board application. Finish materials are easily installed by simply screwing into the exposed face of the ThermaEZE web for a secure hold. It's that easy! Supplemental foam adhesive may also be used for drywall installation.

*NOTE: Do not apply form release to forms that will come in contact with ThermaEZE panels. Make sure any form release previously used on the forms has been completely removed.

PANELS

Part Number	Width (W) Inches	Panel Dimensions		Number of Webs per Panel	Web Horiz. Spacing (S) Inches
		Height (H) Feet	Thickness (T) Inches		
TE248020	24.0	8.0	2.0	3	24.0
TE249020	24.0	9.0	2.0	3	24.0
TE308020	30.0	8.0	2.0	6	15.0
TE309020	30.0	9.0	2.0	6	15.0
TE328020	32.0	8.0	2.0	6	16.0
TE329020	32.0	9.0	2.0	6	16.0
TE368020	36.0	8.0	2.0	6	18.0
TE369020	36.0	9.0	2.0	6	18.0
TE248025	24.0	8.0	2.5	3	24.0
TE249025	24.0	9.0	2.5	3	24.0
TE308025	30.0	8.0	2.5	6	15.0
TE309025	30.0	9.0	2.5	6	15.0
TE328025	32.0	8.0	2.5	6	16.0
TE329025	32.0	9.0	2.5	6	16.0
TE368025	36.0	8.0	2.5	6	18.0
TE369025	36.0	9.0	2.5	6	18.0

FILLER STRIPS

FS048020	4.0	8.0	2.0
FS049020	4.0	9.0	2.0
FS068020	6.0	8.0	2.0
FS069020	6.0	9.0	2.0
FS048025	4.0	8.0	2.5
FS049025	4.0	9.0	2.5
FS068025	6.0	8.0	2.5
FS068025	6.0	9.0	2.5

THERMAEZE WEB

TEWEB1 72 Pieces per Carton

NOTE: All dimensions are subject to normal manufacturing tolerances.



ASK ABOUT ALL OF OUR OTHER CERTAINTEED® PRODUCTS AND SYSTEMS:

ROOFING • SIDING • TRIM • DECKING • RAILING • FENCE • FOUNDATIONS
GYPSUM • CEILINGS • INSULATION • PIPE

www.certainteed.com <http://blog.certainteed.com>

CertainTeed Corporation
P.O. Box 860
Valley Forge, PA 19482

Professional: 800-233-8990
Consumer: 800-782-8777

© 6/11 CertainTeed Corporation, Printed in the U.S.A.
Code No. 40-96-02D